

DNA Isolation from Forensic Samples

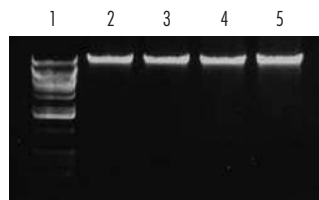
UltraClean™ Forensic DNA Isolation Kit

Certified DNA-free components for isolating PCR quality DNA from forensic samples



Features and Benefits

- Purify genomic and mitochondrial DNA from forensic samples in less than 20 minutes
- All reagents and components are individually packaged for single use
- All required tubes and reagents required are provided and are ready-to-use



High Quality DNA from Forensic Samples

Lane 1: Marker; Lanes 2,3: DNA isolated from Blood Stains;
Lanes 4,5: DNA isolated from Buccal Cells.

DESCRIPTION

The UltraClean™ Forensic DNA Isolation Kit is the only kit on the market where each prep is individually packaged. It is designed to isolate high quality DNA from many different sample types including whole blood, blood stains, feces, buccal cells and most bodily fluids. The purified DNA can be used in sensitive downstream applications such as PCR and QPCR.

Each single prep kit (packaged for 10 or 20 isolations) and all components are certified DNA-free, providing a major advantage over multi-use DNA isolation reagents. Foreign DNA contamination risk is eliminated because reagents are treated with a procedure that destroys any sources of extraneous DNA prior to opening the package. In addition to being DNA-free, all reagents, tips and tubes are individually packaged for each prep (as shown in the photo).

Specifications

Format	Silica Spin Filter Tubes
Binding Capacity	20 µg DNA per spin filter
Throughput	1 - 10 samples
Time	20 minutes
Equipment Required	Microcentrifuge
Packaging	Individually packaged, DNA-free components

ORDER NOW



www.mobio.com

Orders: orders@mobio.com
Toll Free: 800-606-6246
Phone: 760-929-9911
Fax: 760-929-0109

Technical Service: technical@mobio.com

RELATED PRODUCTS YOU MAY NEED

PCR Water (Certified DNA-free)
UltraClean™ Lab Cleaner
Mini Horizontal Gel System
UltraClean™ Forensic Agarose

UltraClean™ Forensic DNA Isolation Kit	
Catalog No.	Quantity
14000-10	10 isolations
14000-20	20 isolations